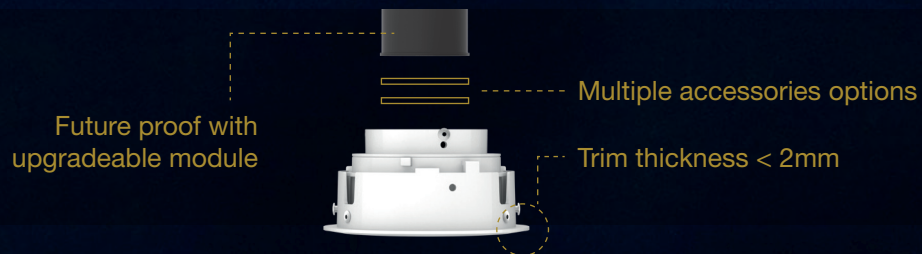
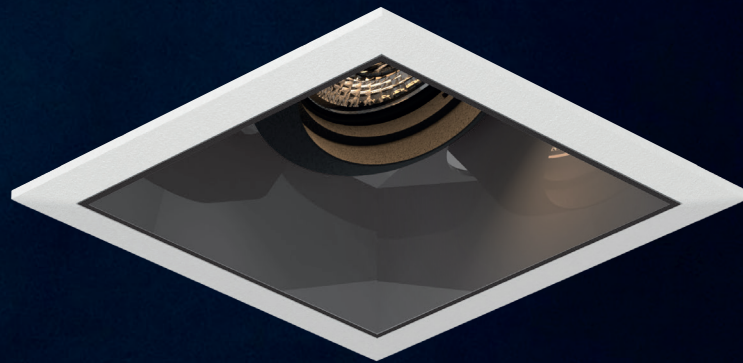
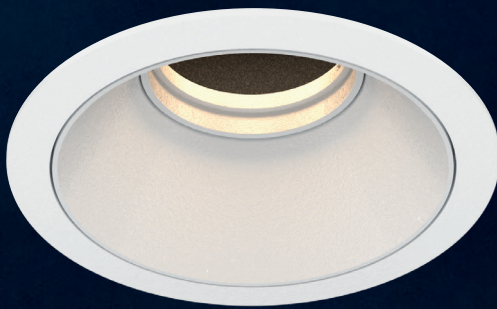


Reduced Glare

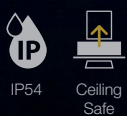
VASARI

DOWNLIGHT SERIES

A series of premium recessed downlights available in various sizes, shapes, and finishing. Paired with ELR's highly configurable LED modules, the Vasari downlight series offers a high degree of flexibility, aesthetics and functionality for the most discerning of applications.



Fixture Features



Module Colour Temperature Variation



Beam Angle



Driver Dimming Variation

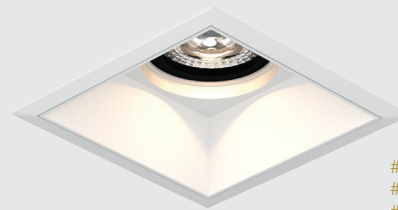


VASARI 3

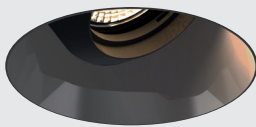
RECESSED ROUND FIX / TILT DOWNLIGHT LUMINAIRE



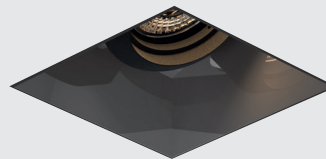
#ROUND
#FIX
#TRIM



#SQUARE
#FIX
#TRIM



#ROUND
#TILT
#TRIMLESS



#SQUARE
#TILT
#TRIMLESS

TECHNOLOGY AND FEATURES



Advanced Thermal Protection System



Low Flicker, No Risk (IEEE 1789)



Converging Optical Lens Maximising LOR



Ceiling Safe

AVAILABLE OPTIONS

FITTURE COLOUR OPTIONS	Trim Colour Options	Reflector Colour Options		
		MATT WHITE RAL9003	MATT BLACK RAL9011	CHROME
MATT WHITE RAL9003				
MATT BLACK RAL9011				

ACCESSORIES
Honeycomb Anti-Glare Louvre Soft Lens Linear Spread Lens Comfort Pro IP54 MR16 Holder GU10 Holder <p><i>*IP54 seal accessory is valid for fix angle fixtures only.</i></p>

LED MODULE														
	<p><i>*Drivers for 24CV LED modules are sold separately.</i></p> <p>SINGLE CCT </p>	<p>50PM / 50CM / 50P / 50C / 35P / 50N / 35N / COIN</p>		✓	✓	✓	✓							
		<p>35P-HI / 50N-HI / 35N-HI / COIN-HI</p>		✓										
ComfySHIFT	ComfySHIFT 35P / 50N		✓	✓	✓	✓								
WARM DIM	WARM DIM 50P / 35P / 50N / 35N / COIN		✓	✓	✓	✓								
tuneWHITE	tuneWHITE 50P / 50N / COIN				✓	✓	✓							
flexiK	flexiK													
<p><i>**tuneWHITE and flexiK are recommended to be paired with Soft Lens for better colour mixing effect.</i></p>														
<p><i>*Drivers for RGBW LED modules are sold separately.</i></p>	<p>RGBW</p> RGBW 50P				✓	✓								

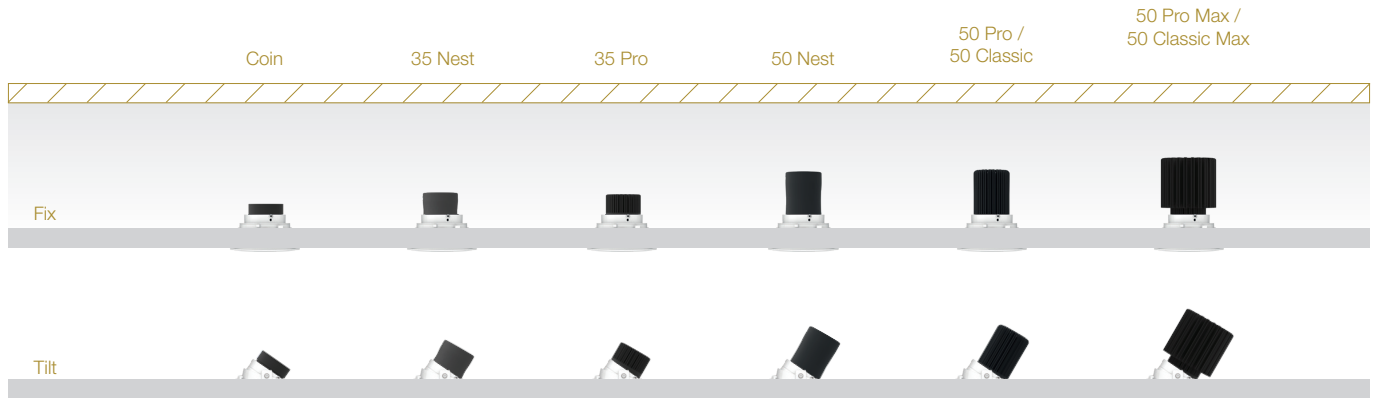
DRIVER DIMMING
(ND) (PH) (AN) (DA)

VASARI 3

- #ROUND
- #SQUARE
- #FIX
- #TILT
- #TRIM
- #TRIMLESS

SPECIFICATIONS

FIXTURE	
Family Type	Vasari series
Fixture Colours	Matt white, matt black
Reflector Colours	Matt white, matt black, chrome
Fixture Materials	Aluminium (and plastic for chrome reflector)
Accessories	Honeycomb anti-glare louvre, soft lens, linear spread lens, Comfy Pro, IP54 seal
Ingress Protection	IP40, IP54
LED MODULE & DRIVER	
Compatible LED Modules	50, 35, COIN series LED modules or MR16/GU10
Lifetime	Up to 50,000 hours L80 lamp life with LM80 tested LED chip packages
Beam Angles	10°, 20°, 35°, 60°
Colour Temperatures	2700K, 3000K, 3500K, 4000K, 5000K, ComfySHIFT, Warm Dim, tuneWHITE, flexiK, RGBW
CRI	High Efficiency (CRI-85), ProART (CRI-95), ProART98 (CRI-98)
Driver (Dimming)	Non-dim, phase (leading & trailing edge), 0-10V, DALI



DIMENSIONS (MM)																																																											
ROUND					<table border="1"> <tr> <th rowspan="2">Module</th> <th colspan="2">Fix</th> <th colspan="2">Tilt</th> </tr> <tr> <th>Matt</th> <th>Dark Light</th> <th>Matt / Dark Light</th> <th>Matt / Dark Light</th> </tr> <tr> <td>50PM / 50CM:</td> <td>129</td> <td>139</td> <td>129</td> <td>129</td> </tr> <tr> <td>50P / 50C:</td> <td>115</td> <td>125</td> <td>113</td> <td>113</td> </tr> <tr> <td>50N:</td> <td>112</td> <td>122</td> <td>110</td> <td>110</td> </tr> <tr> <td>35P / 35N:</td> <td>86</td> <td>96</td> <td>87</td> <td>87</td> </tr> <tr> <td>COIN:</td> <td>62</td> <td>72</td> <td>66</td> <td>66</td> </tr> <tr> <td>50N-HI:</td> <td>122</td> <td>132</td> <td>120</td> <td>120</td> </tr> <tr> <td>35P-HI / 35N-HI:</td> <td>96</td> <td>106</td> <td>97</td> <td>97</td> </tr> <tr> <td>COIN-HI:</td> <td>72</td> <td>82</td> <td>76</td> <td>76</td> </tr> <tr> <td>MR16 / GU10</td> <td>86</td> <td>96</td> <td>87</td> <td>87</td> </tr> </table>	Module	Fix		Tilt		Matt	Dark Light	Matt / Dark Light	Matt / Dark Light	50PM / 50CM:	129	139	129	129	50P / 50C:	115	125	113	113	50N:	112	122	110	110	35P / 35N:	86	96	87	87	COIN:	62	72	66	66	50N-HI:	122	132	120	120	35P-HI / 35N-HI:	96	106	97	97	COIN-HI:	72	82	76	76	MR16 / GU10	86	96	87	87
	Module	Fix		Tilt																																																							
Matt		Dark Light	Matt / Dark Light	Matt / Dark Light																																																							
50PM / 50CM:	129	139	129	129																																																							
50P / 50C:	115	125	113	113																																																							
50N:	112	122	110	110																																																							
35P / 35N:	86	96	87	87																																																							
COIN:	62	72	66	66																																																							
50N-HI:	122	132	120	120																																																							
35P-HI / 35N-HI:	96	106	97	97																																																							
COIN-HI:	72	82	76	76																																																							
MR16 / GU10	86	96	87	87																																																							
SQUARE					<table border="1"> <tr> <th rowspan="2">Module</th> <th colspan="2">Fix</th> <th colspan="2">Tilt</th> </tr> <tr> <th>Matt</th> <th>Dark Light</th> <th>Matt / Dark Light</th> <th>Matt / Dark Light</th> </tr> <tr> <td>50PM / 50CM:</td> <td>132</td> <td>139</td> <td>134</td> <td>134</td> </tr> <tr> <td>50P / 50C:</td> <td>118</td> <td>125</td> <td>118</td> <td>118</td> </tr> <tr> <td>50N:</td> <td>115</td> <td>122</td> <td>115</td> <td>115</td> </tr> <tr> <td>35P / 35N:</td> <td>89</td> <td>96</td> <td>92</td> <td>92</td> </tr> <tr> <td>COIN:</td> <td>65</td> <td>72</td> <td>71</td> <td>71</td> </tr> <tr> <td>50N-HI:</td> <td>125</td> <td>132</td> <td>125</td> <td>125</td> </tr> <tr> <td>35P-HI / 35N-HI:</td> <td>99</td> <td>106</td> <td>102</td> <td>102</td> </tr> <tr> <td>COIN-HI:</td> <td>75</td> <td>82</td> <td>81</td> <td>81</td> </tr> <tr> <td>MR16 / GU10</td> <td>89</td> <td>96</td> <td>92</td> <td>92</td> </tr> </table>	Module	Fix		Tilt		Matt	Dark Light	Matt / Dark Light	Matt / Dark Light	50PM / 50CM:	132	139	134	134	50P / 50C:	118	125	118	118	50N:	115	122	115	115	35P / 35N:	89	96	92	92	COIN:	65	72	71	71	50N-HI:	125	132	125	125	35P-HI / 35N-HI:	99	106	102	102	COIN-HI:	75	82	81	81	MR16 / GU10	89	96	92	92
	Module	Fix		Tilt																																																							
Matt		Dark Light	Matt / Dark Light	Matt / Dark Light																																																							
50PM / 50CM:	132	139	134	134																																																							
50P / 50C:	118	125	118	118																																																							
50N:	115	122	115	115																																																							
35P / 35N:	89	96	92	92																																																							
COIN:	65	72	71	71																																																							
50N-HI:	125	132	125	125																																																							
35P-HI / 35N-HI:	99	106	102	102																																																							
COIN-HI:	75	82	81	81																																																							
MR16 / GU10	89	96	92	92																																																							

Height increase with accessories:
 Anti-Glare Louvre : Height +6
 Soft Lens : Height +3
 Linear Spread Lens : Height +3
 Comfy Pro : Height +20

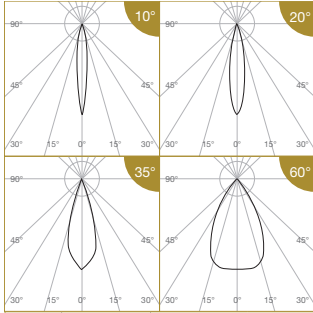
(refer to module driver dimensions)

VASARI 3

PHOTOMETRICS



50 PRO



Height (m)	E(0°)	E _{max} (lx)			
		10°	20°	35°	60°
1	E(0°)	8185	5304	3119	1206
	Cone Ø (m)	0.19	0.34	0.60	1.15
2	E(0°)	2046	1326	780	301
	Cone Ø (m)	0.38	0.68	1.19	2.30
3	E(0°)	909	589	347	134
	Cone Ø (m)	0.57	1.03	1.79	3.45
4	E(0°)	512	331	195	75
	Cone Ø (m)	0.76	1.37	2.38	4.60
5	E(0°)	327	212	125	48
	Cone Ø (m)	0.95	1.71	2.98	5.75

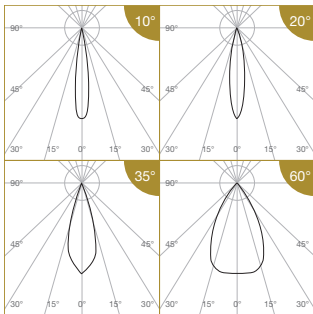
Correction Factor:
 50P (10°) - f = 1.00 50P (20°, 35°, 60°) - f = 1.00
 50C (10°) - f = 0.78 50C (20°, 35°, 60°) - f = 0.80
 35P (10°) - f = 0.62 35P (20°, 35°, 60°) - f = 0.71
 50N (10°) - f = 0.58 50N (20°, 35°, 60°) - f = 0.63
 35N (10°) - f = 0.42 35N (20°, 35°, 60°) - f = 0.47
 COIN (10°) - f = 0.35 COIN (20°, 35°, 60°) - f = 0.38
 50PM (10°) - f = 1.69 50PM (20°, 35°, 60°) - f = 1.73
 50CM (10°) - f = 1.37 50CM (20°, 35°, 60°) - f = 1.40
 50P-24CV (10°) - f = 0.75 50P-24CV (20°, 35°, 60°) - f = 0.70
 50C-24CV (10°) - f = 0.62 50C-24CV (20°, 35°, 60°) - f = 0.57
 35P-24CV (10°) - f = 0.48 35P-24CV (20°, 35°, 60°) - f = 0.49
 COIN-24CV (10°) - f = 0.28 COIN-24CV (20°, 35°, 60°) - f = 0.27

ELR LED Module				50P	50C	35P	50N	35N	COIN	50PM	50CM
LED Power				12W	10W	8W	7.5W	5.5W	4.5W	21W	17W
System Power				15.2W	12.8W	11W	10W	7.5W	6W	25W	21W
Luminous Flux (lm)	Type	Beam Angle	CRI								
	Single CCT (3000K)	10°	High Efficiency Ra-85	1079	847	672	623	457	374	1826	1477
			ProART Ra-95	917	720	572	530	388	318	1552	1256
			ProART98 Ra-98	755	593	471	436	320	261	1278	1034
		20°	High Efficiency Ra-85	1395	1116	995	884	651	530	2418	1953
			ProART Ra-95	1186	949	846	751	553	451	2055	1660
			ProART98 Ra-98	977	781	697	618	456	371	1693	1367
	35°	High Efficiency Ra-85	1410	1128	1006	893	658	536	2444	1974	
		ProART Ra-95	1199	959	855	760	559	456	2077	1678	
		ProART98 Ra-98	987	790	704	625	461	375	1711	1382	
	60°	High Efficiency Ra-85	1440	1152	1027	912	672	547	2496	2016	
ProART Ra-95		1224	979	874	776	571	466	2122	1714		
ProART98 Ra-98		1008	806	719	638	470	383	1747	1411		
Input Power (24CV)				12W	10W	8W			4.5W		
Luminous Flux (lm)	Type	Beam Angle	CRI								
	24CV Single CCT (3000K)	10°	High Efficiency Ra-85	805	664	523				307	
			ProART Ra-95	685	564	445				261	
			ProART98 Ra-98	564	465	366				215	
		20°	High Efficiency Ra-85	977	800	688				381	
			ProART Ra-95	830	680	585				325	
			ProART98 Ra-98	684	560	482				267	
	35°	High Efficiency Ra-85	987	808	696				385		
		ProART Ra-95	839	687	591				328		
		ProART98 Ra-98	691	566	487				270		
	60°	High Efficiency Ra-85	1008	826	710				394		
ProART Ra-95		857	702	604				335			
ProART98 Ra-98		706	578	497				276			

Data are based on 3000K (ProART CRI-95). Nominal data of 2700K and 3500K are shared with 3000K. Higher CCT of 4000K and 5000K will have a nominal data value of 5% higher than published. (f = 1.05)
 High Efficiency CRI-85 will have a nominal data value of 15% higher than published. (f = 1.17)
 ProART98 CRI-98 will have a nominal data value of 18% lower than published. (f = 0.82)

Nominal CRI-85, equals to Ra>80-87, R9>0
 Nominal CRI-95, equals to Ra>90-97, R9>50
 Nominal CRI-98, equals to Ra>97-99, R9>93

35 PRO ComfySHIFT



Height (m)	E(0°)	E _{max} (lx)			
		10°	20°	35°	60°
1	E(0°)	4295	3536	2079	804
	Cone Ø (m)	0.27	0.34	0.60	1.15
2	E(0°)	1074	884	520	201
	Cone Ø (m)	0.53	0.68	1.19	2.30
3	E(0°)	477	393	231	89
	Cone Ø (m)	0.80	1.03	1.79	3.45
4	E(0°)	268	221	130	50
	Cone Ø (m)	1.07	1.37	2.38	4.60
5	E(0°)	172	141	83	32
	Cone Ø (m)	1.33	1.71	2.98	5.75

Correction Factor: 35P CS - f = 1.00
 50N CS - f = 0.94

ELR LED Module				35P	50N
LED Power				8W	7.5W
System Power				11W	10W
Luminous Flux (lm)	Type	Beam Angle	CRI		
	ComfySHIFT (3100K)	10°	ProART Ra-95	706	664
				791	744
				799	752
				816	768

Data are based on maximum output at 3100K.
 Nominal CRI-95, equals to Ra>90-97, R9>50

VASARI 3

PHOTOMETRICS



50 PRO WARM DIM

Height (m)	Emax (lx)	Emax (lx)				ELR LED Module																
		10°	20°	35°	60°	50P	35P	50N	35N	COIN												
1	E(0°)	6469	5325	3131	1211	LED Power																
	Cone Ø (m)	0.27	0.34	0.60	1.15	System Power																
2	E(0°)	1617	1331	783	303	Luminous Flux (lm)	Type	Beam Angle	CRI	50P	35P	50N	35N	COIN								
	Cone Ø (m)	0.53	0.68	1.19	2.30																	
3	E(0°)	719	592	348	135										Warm Dim (3100K)	10°	ProART Ra-95	1062	706	664	490	398
	Cone Ø (m)	0.80	1.03	1.79	3.45													1190	791	744	549	446
4	E(0°)	404	333	196	76													20°	1203	799	752	555
	Cone Ø (m)	1.07	1.37	2.38	4.60	35°	1229	816	768	566	461											
5	E(0°)	259	213	125	48		60°															
	Cone Ø (m)	1.33	1.71	2.98	5.75																	

Data are based on maximum output at 3100K.
Nominal CRI-95, equals to Ra>90-97, R9>50

Correction Factor: 50P WD - f = 1.00
35P WD - f = 0.66
50N WD - f = 0.63
35N WD - f = 0.46
COIN WD - f = 0.38



50 PRO tuneWHITE/flexiK

Height (m)	Emax (lx)	Emax (lx)			ELR LED Module												
		20°	35°	60°	50P	50N	COIN										
1	E(0°)	4160	2446	946	LED Power												
	Cone Ø (m)	0.34	0.60	1.15	System Power												
2	E(0°)	1040	612	236	Luminous Flux (lm)	Type	Beam Angle	CRI	50P	50N	COIN						
	Cone Ø (m)	0.68	1.19	2.30													
3	E(0°)	462	272	105								tuneWHITE/flexiK (4000K / 6500K)	20°	ProART Ra-95	930	558	335
	Cone Ø (m)	1.03	1.79	3.45											940	564	338
4	E(0°)	260	153	59											35°	960	576
	Cone Ø (m)	1.37	2.38	4.60													
5	E(0°)	166	98	38	60°												
	Cone Ø (m)	1.71	2.98	5.75													

Data are based on maximum output at highest CCT (4000K / 6500K).
2700K will have a nominal data value of 10% lower than published. (f = 0.90)
1800K will have a nominal data value of 30% lower than published. (f = 0.70)
Nominal CRI-95, equals to Ra>90-97, R9>50

Correction Factor: 50P TW / FK - f = 1.00
50N TW / FK - f = 0.60
COIN TW / FK - f = 0.36



50 PRO RGBW

Height (m)	Emax (lx)	Emax (lx)		ELR LED Module								
		35°	60°	50P								
1	E(0°)	1480	572	LED Power								
	Cone Ø (m)	0.60	1.15	System Power								
2	E(0°)	370	143	Luminous Flux (lm)	Type	Beam Angle	CRI	50P				
	Cone Ø (m)	1.19	2.30									
3	E(0°)	164	64						RGBW	35°	N/A	569
	Cone Ø (m)	1.79	3.45									581
4	E(0°)	93	36									60°
	Cone Ø (m)	2.38	4.60									
5	E(0°)	59	23									
	Cone Ø (m)	2.98	5.75									

Data are based on maximum output of all 4 RGBW channels.



35 PRO HIGH INTENSITY

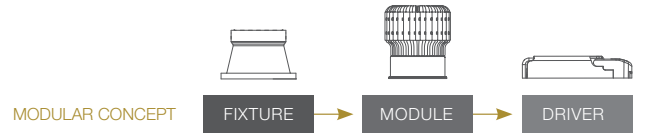
Height (m)	Emax (lx)	ELR LED Module														
		35P-HI	50N-HI	35N-HI	COIN-HI											
1	E(0°)	LED Power														
	Cone Ø (m)	System Power														
2	E(0°)	Luminous Flux (lm)	Type	Beam Angle	CRI	35P-HI	50N-HI	35N-HI	COIN-HI							
	Cone Ø (m)															
3	E(0°)									Single CCT (3000K)	10°	High Efficiency Ra-85	587	552	405	329
	Cone Ø (m)											ProART Ra-95	499	469	344	280
4	E(0°)											ProART98 Ra-98	411	386	284	231
	Cone Ø (m)															
5	E(0°)															
	Cone Ø (m)															

Correction Factor: 35P-HI - f = 1.00
50N-HI - f = 0.94
35N-HI - f = 0.69
COIN-HI - f = 0.56

Reduced Glare



VASARI 3



ORDERING MATRIX CHART

Fixture												
Type	Trim Options		Shape		Angle		Colour		Reflector Colour		Accessories	
VASARI-3	T	Trim	RD	Round	FX	Fix	WH	Matt White	WH	Matt White	N	None
	X	Trimless	SQ	Square	TL	Tilt	MB	Matt Black	MB	Matt Black	AGL	Anti-Glare Louvre
									CR	Chrome	SL	Soft Lens
											LSL	Linear Spread Lens
											CP	Comfort Pro
											IP	IP54**
											CMB	COIN Module Bracket****
											MR16	MR16 Holder
											GU10	GU10 Holder

**IP54 seal accessory is valid for fix angle fixtures only.

****COIN Module Bracket accessory is necessary when paired with COIN LED module variants.

Single CCT LED Module					Driver	
LED Power	Beam Angle		Colour Temp	CRI		Dimming
ELR50PM	21W	10° 10°	27 2700K	HE	Ra-85	ND Non-Dim
ELR50CM	17W	20° 20°	30 3000K	PA	ProART	PH Phase
ELR50P	12W	35° 35°	35 3500K	PP	ProART98	AN 0-10V
ELR50C	10W	60° 60°	40 4000K			DA DALI
ELR35P	8W		50 5000K			
ELR50N	7.5W					
ELR35N	5.5W					
ELRCOIN	4.5W					
ELR35P-HI	8W	NS 10°	27 2700K	HE	Ra-85	ND Non-Dim
ELR50N-HI	7.5W		30 3000K	PA	ProART	PH Phase
ELR35N-HI	5.5W		35 3500K	PP	ProART98	AN 0-10V
ELRCOIN-HI	4.5W		40 4000K			DA DALI
			50 5000K			
ELR50P-24CV	12W	10° 10°	27 2700K	HE	Ra-85	
ELR50C-24CV	10W	20° 20°	30 3000K	PA	ProART	
ELR35P-24CV	8W	35° 35°	35 3500K	PP	ProART98	
ELRCOIN-24CV	4.5W	60° 60°	40 4000K			
			50 5000K			

*Drivers for 24CV LED modules are sold separately.

Warm Dim LED Module						Driver	
LED Power	Beam Angle		Colour Temp		CRI	Dimming	
ELR50P	12W	10° 10°	WD	Warm Dim	PA	ProART	PH Phase
ELR35P	8W	20° 20°					AN 0-10V
ELR50N	7.5W	35° 35°					DA DALI
ELR35N	5.5W	60° 60°					
ELRCOIN	4.5W						

tuneWHITE LED Module						Driver	
LED Power	Beam Angle		Colour Temp		CRI	Dimming	
ELR50P	12W	20° 20°	TW1831	tuneWHITE 1800K-3100K	PA	ProART	DA DALI
ELR50N	7.5W	35° 35°	TW1840	tuneWHITE 1800K-4000K			
ELRCOIN	4.5W	60° 60°	TW2765	tuneWHITE 2700K-6500K			

flexiK LED Module					Driver		
LED Power	Beam Angle		Colour Temp	CRI	Dimming		
ELR50P	12W	20° 20°	FK##	flexiK	PA	ProART	PH Phase
ELR50N	7.5W	35° 35°					AN 0-10V
ELRCOIN	4.5W	60° 60°					DA DALI

denotes the first two digits of preferred CCT ranging from 1800K to 6500K by increment of 100K.

ComfySHIFT LED Module					Driver		
LED Power	Beam Angle		Colour Temp	CRI	Dimming		
ELR35P	8W	10° 10°	CS	ComfySHIFT	PA	ProART	ND Non-Dim
ELR50N	7.5W	20° 20°					
		35° 35°					
		60° 60°					

RGBW LED Module				
LED Power	Beam Angle		Colour Temp	
ELR50P	12W	35° 35°	RGBW	Red, Green, Blue, White
		60° 60°		

*Drivers for RGBW LED modules are sold separately.

example: VASARI-3.X.RD.FX.WH.WH.AGL.ELR50P35.27.PA.DA

*Custom RAL colour options available.